

# 2023 Annual Sponsorship

## Join our Distinguished Partner Team

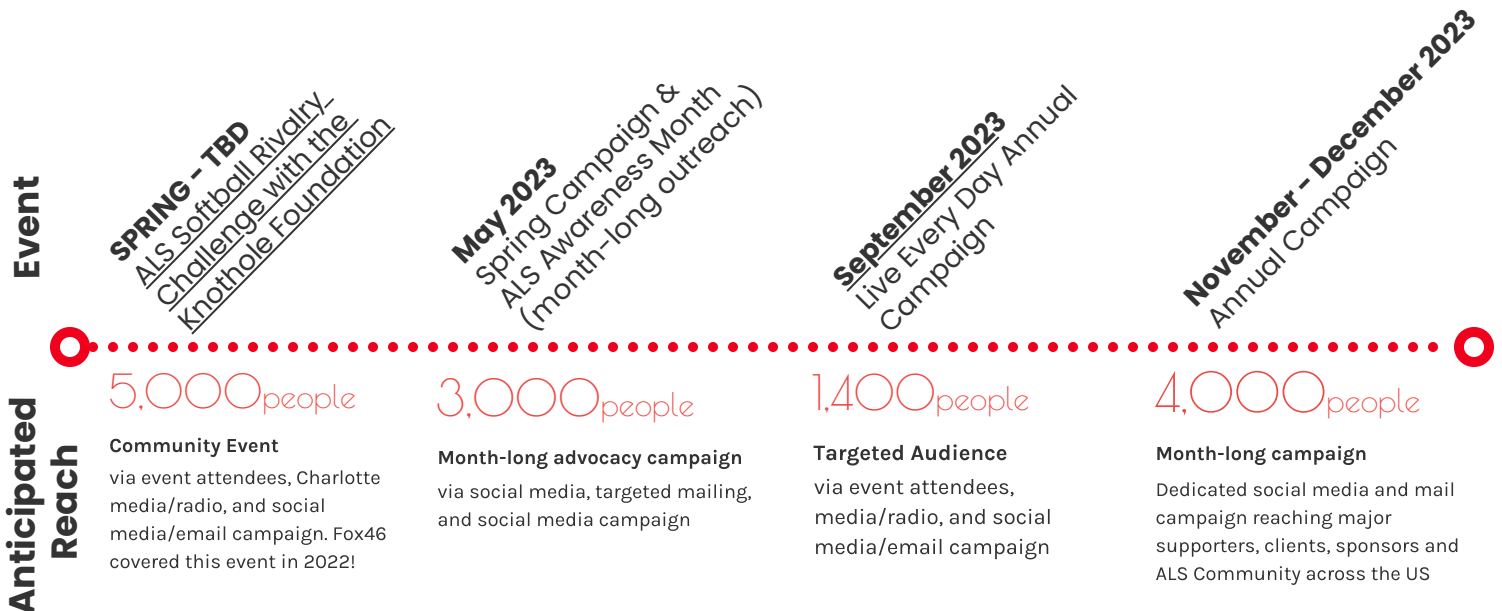
Our Distinguished Partners are deeply embedded in our organization's impact. Their employees have the opportunity to volunteer and engage with our mission, and their leadership has the opportunity to interact with our team on a regular basis to increase our mutual visibility and reach across the communities we serve.

**As a Distinguished Partner, you have committed to giving strategically to serve families affected by ALS. You share in our mission to ensure that people with ALS are equipped to live every day with **purpose**, with **joy**, and with **hope**.**

**We are grateful for you.** You are recognized throughout the year, along with a remarkable group of Giving Circle supporters, for your significant and strategic commitment to helping people and families who are bravely navigating ALS.



## 2023 Events & Sponsor Visibility Timeline



# Distinguished Partner Benefits (By Giving Circle Tier):

Distinguished Partner Giving Circles	Legacy Circle	Gift of Joy	Gift of Love	Gift of Hope
<b>Benefits</b>	<b>\$10,000+</b>	<b>\$5,000-14,999</b>	<b>\$2,500-4,999</b>	<b>\$1,000-2,499</b>
Invitation to annual Legacy Partner reception	✓			
Company name, logo featured on targeted event invitations, event and campaign press releases to media	✓	✓		
Unique impact updates about ALS care made possible by your specific sponsorship; can be tailored to your corporate communications needs	✓	✓	✓	
Year-round listing on Distinguished Partner Banner, JMALSF Website	✓	✓	✓	✓
Acknowledgment on quarterly email going to 4,000+ individuals	✓	✓	✓	✓
Company logo and/or name featured on event webpages; annual report and electronic event materials	✓	✓	✓	✓

## Distinguished Partner Impact

### Legacy

Your **Legacy Gift** covers the costs of

- Two years of in-home care for an individual navigating ALS
- Ten in-home assessments, important to equip beneficiaries who may face future mobility and functional challenges

### Gift of Joy

Your **Gift of Joy** covers the costs of

- One year of in-home care for an individual navigating ALS
- One month of transportation and caregiving support for one individual or family navigating ALS

### Gift of Love

Your **Gift of Love** covers the costs of

- One year of transportation and logistics support for multiple individuals or families affected by ALS
- Five in-home assessments, important to equip beneficiaries who may face future mobility and functional challenges

### Gift of Hope

Your **Gift of Hope** covers the costs of

- Two months of in-home care for one individual navigating ALS
- Ten in-home assessments, important to equip beneficiaries who may face future mobility and functional challenges

**Yes, we would like to become a Distinguished Partner of The Joe Martin ALS Foundation to help people with ALS live with purpose, with joy, and with hope.**

Individual or Company Name: \_\_\_\_\_

Sponsorship Tier:

- Legacy Sponsor - \$15,000+
- Gift of Joy - \$5,000
- Gift of Love - \$2,500
- Gift of Hope - \$1,000
- Gift in-kind (goods or services)
- Custom Amount

We explain **Giving Circles**, and their benefits and life-changing impact, in detail on our website:

Visit us online to learn more:

[www.joemartinalsfoundation.org/givingcircles/](http://www.joemartinalsfoundation.org/givingcircles/)

Specific Amount Pledged: \$ \_\_\_\_\_



Donation made online at  
[www.joemartinalsfoundation.org/donate/](http://www.joemartinalsfoundation.org/donate/)  
\_\_\_\_\_ (or scan QR code at right)

\_\_\_\_\_ Please send me an invoice

**Please provide a high resolution .jpeg and AI image of your logo to [catherine@joemartinalsfoundation.org](mailto:catherine@joemartinalsfoundation.org)**

Contact Name: \_\_\_\_\_

Web Address: \_\_\_\_\_

Mailing Address: \_\_\_\_\_

Phone: \_\_\_\_\_

Email: \_\_\_\_\_

Contact Catherine Fraser, Director of Development for further information:  
[catherine@joemartinalsfoundation.org](mailto:catherine@joemartinalsfoundation.org) | 704-332-1929 ext. 806

The Joe Martin ALS Foundation's mission is to empower families as they face the challenge of living actively with ALS by providing home care and other services at no cost.



The Joe Martin ALS Foundation  
100 N. Tryon Street, Suite 3420  
Charlotte, NC 28202  
(704) 332-1929  
[www.joemartinalsfoundation.org](http://www.joemartinalsfoundation.org)  
Tax ID # 26-0163120

